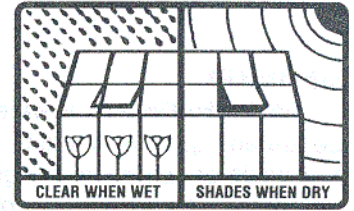


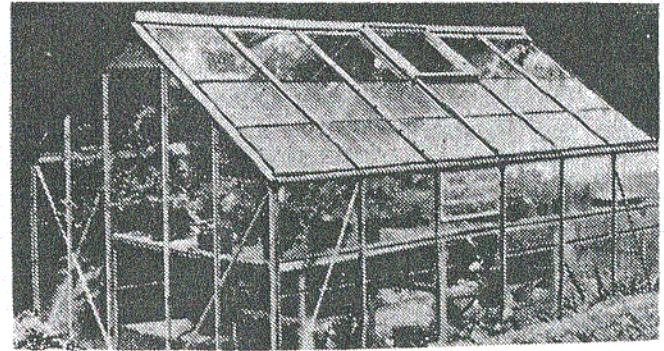
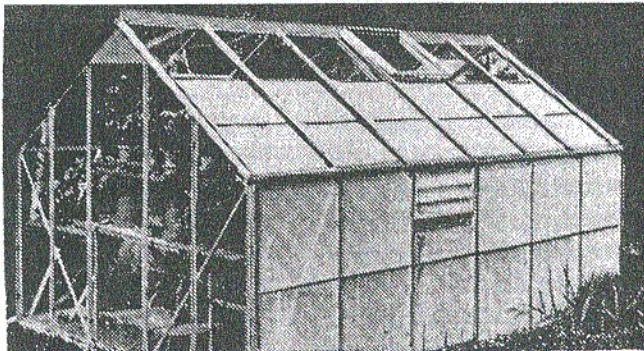
#2035

# NEW REMOVABLE VARI SHADE-2®

FOR GREENHOUSE GROWERS



A revolutionary new type of easily removable VARISHADE with much greater coverage



The dry/wet, shade/clear cycle will repeat continuously as weather conditions change, cooling on hot days yet speeding growth and helping to eliminate disease in dull wet conditions.

Inside or outside *any* plastic or glass structure, you can help control the amount of solar light and heat with VARISHADE-2 and reduce operating costs. This unique Shading can be sprayed, roller-coated, dipped or brushed onto glass or any plastic.

When VARISHADE-2 is applied to the *inside* of glass or plastic structures, the VARISHADE-2 will be kept wet by **WINTER** condensation and will be transparent and drip-free, so as to transmit more solar energy. Depending on conditions, winter heating costs should be reduced. This same inside VARISHADE-2 coating will be dry in **SUMMER** with no condensation occurring, and provide shading. Again depending on conditions, summer cooling costs should be *reduced*. If desired, the inside VARISHADE-2 coating can also be wetted with water sprays to be made transparent.

This wet-dry cycle will keep repeating indefinitely. You can regulate the amount of shade you desire by the amount of VARISHADE-2 coating applied.

Rain or outside water sprays will cause an *exterior* coat of VARISHADE-2 to become practically transparent and thus let in more light when desired. After the rain or water spray stops, the VARISHADE-2 coating will dry and resume its shading effect.

Order direct from your Equipment Supplier.  
If not available locally, order direct and advise us of the name of your supplier.

VARISHADE-2 can be applied over SUN CLEAR, our non-drip coating, a perfect prime coat for some few materials which are difficult to coat.

### VARISHADE-2 PRICE LIST (FOB DEALER)

VARISHADE-2 (Conc. Vol.*)	COVERAGE (av. sq. ft.)	PRICE U.S.\$
1 PT. (0.473 L)	400	
1 QT. (0.946 L)	800	
1 GAL. (3.785 L)	3,200	
5 GAL. (18.925 L)	16,000	

\* VARISHADE-2 may be thinned with water to satisfy method of application and/or shading density desired.

For very intensive shading a universal color additive can be added to VARISHADE-2 before application

When desired, rubbing and flushing with water will remove VARISHADE-2. A 3% mixture of an alkaline cleaner such as Soilax® or Spic and Span® in water will generally soften a VARISHADE-2 coating so that it can be later flushed off with a water spray.

VARISHADE-2 will resist acid rain that is appearing in many parts of the world.

"Engineer Holstein at the Testing Station for Vegetables under Glass at Naaldwijk, Holland was very enthusiastic after comparing VARISHADE with other shading products."

M.C. VISSER  
Firma Visser / -'s Gravendeel, Holland

Makers of the  
"No-Drip" Coating  
for greenhouses  
and other  
plastic structures.



# SolarSun, Inc.

Products for the control of Condensation and Light

1000 University Road, P.O. Box 108, Berkeley, CA 94709 U.S.A. Tel: 415/841-4141  
In Europe: P.O. Box 400, 3720 BA Zandvoort, The Netherlands. Tel: 023-462-0020

Fax: 011-444-0976



# How to Apply



SHADES WHEN DRY  
TRANSPARENT WHEN WET

The revolutionary new type of Shading Coating that shades excess summer sunlight and without removal transmits winter sunlight when wet on GLASS or PLASTIC

## GENERAL

VARISHADE-2 is a water dispersible formula in concentrated liquid form which, when diluted and applied to the inside or outside of any glass or plastic structure, helps you control the amount of solar light and heat you desire.

## MIXING VARISHADE-2 (SHAKE CONTAINER)

For best results, VARISHADE-2 should be applied immediately after diluting it with water, and not be stored in the diluted condition. Mix in clean equipment one part of VARISHADE-2 with four to six parts of water depending on the shading density required. One gallon of VARISHADE-2 covers approximately 3,200 square feet. Use the diluting water to flush out the shipping container. For best results, use warm water when diluting VARISHADE-2.

The concentrate will thicken with storage, but will become less viscous with stirring or shaking.

## EQUIPMENT REQUIRED

No special or unusual equipment is required for VARISHADE-2 application. Ordinary blower misters or sprayers can be used or VARISHADE-2 can be brushed or roller-coated. All equipment must be cleaned thoroughly and flushed with clear water before using to keep VARISHADE-2 free of contaminants. Rinsing after use is also advisable.

## APPLYING VARISHADE-2

Surfaces to be coated with VARISHADE-2 should be as dry as possible. The mixture should be tested on a small area with a mister or fine spray, working from the bottom up. VARISHADE-2 can also be brushed or roller-coated. Apply fan spray until surface is evenly wet. The VARISHADE-2 coating becomes visible only after it has dried. When dry it will immediately reduce or shade excessive solar light and heat. One initial drying is required to fix the coating. It is suggested that a drop cloth be used temporarily to cover plants that are under an inside spraying area. If possible, before applying VARISHADE-2 to plastics, allow plastics to age in sun and rain for approximately two weeks.

## VARISHADE-2 WET-DRY CYCLES

You can regulate the amount of shade you desire by the amount of VARISHADE-2 coating applied. In the sun the milky VARISHADE-2 liquid turns to a white conventional looking shading material. When moisture is present by rain or outside water sprays, an exterior coat of VARISHADE-2 becomes practically transparent and thereby lets in maximum light. After the rain or water spraying stops, the VARISHADE-2 coating will dry and resume its shading effect. This wet-dry cycle will keep repeating indefinitely.

## VARISHADE-2 IN THE WINTER

When applied to the inside of glass or plastic structures, generally, the normal condensation that occurs in winter will keep VARISHADE-2 transparent and thereby transmit more solar energy. Depending upon conditions, winter heating costs may be significantly reduced. VARISHADE-2 also stops dripping.

## VARISHADE-2 IN THE SUMMER

The same VARISHADE-2 coating that is used in the winter will be dry and will provide shading in the summer, with no condensation occurring. Again, depending on conditions, cooling or air conditioning costs may be reduced. The inside VARISHADE-2 coating can be wetted with water sprays to be made transparent.

## OTHER VARISHADE-2 INFORMATION

Varishade-2 can be applied over SUN CLEAR, another fine product by Solar Sunstill, Inc. that controls condensation.

For removal apply a 3% mixture of an alkaline cleaner such as Soliax® or Spic and Span® in water. Let this mixture soften the VARISHADE-2 coating and then flush with water.

VARISHADE-2 concentrate should be protected from freezing. If the concentrate has become frozen, it becomes very viscous. The proper viscosity can be restored by vigorous mixing.

Even greater shading effects may be obtained by adding a universal color additive dye such as green to VARISHADE-2 before application.

## ADDITIVE DYE

4 OZ. (MIX WITH 1-GL VARISHADE-2)

PT. (MIX WITH 5-GL VARISHADE-2)

QT. (MIX WITH 10-GL VARISHADE-2)



A non-drip coating which eliminates dripping and fogging from condensation on plastic and glass greenhouses. SUN CLEAR® is a perfect prime coat for some materials which are difficult to coat with VARISHADE-2.

© Registered U.S. Trademark Office

# SolarSun, Inc.

Products for the control of Condensation and Light

15 Blumery Ridge Rd., Genesee, NY 11733 U.S.A.

Tel: 815-541-4066 Fax: 815-541-0672

Toll Free: 877-015-2177

WWW.SOLARSUN.COM E-MAIL: [Sales@SolarSun.com](mailto:Sales@SolarSun.com)