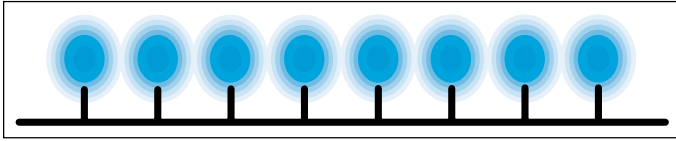


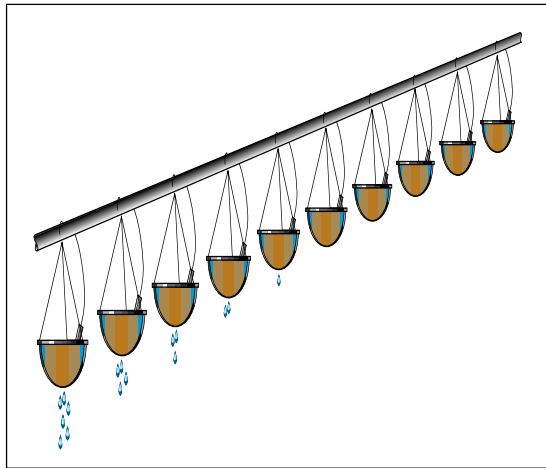


QUICK GUIDE

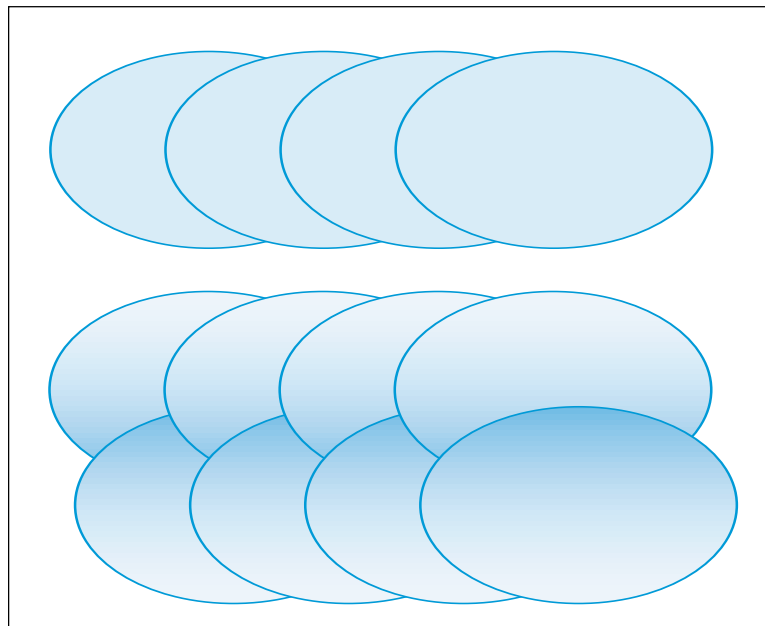
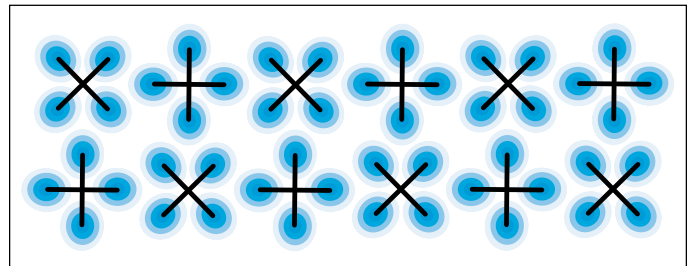
2' Bench

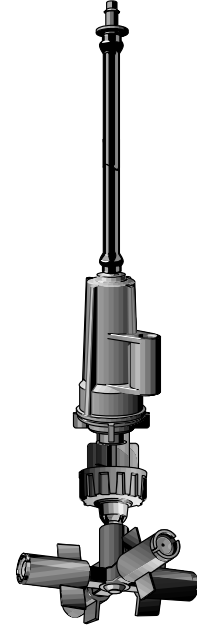


3-4' Bench

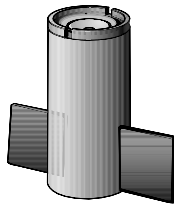


5-8' Bench





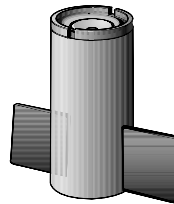
Blue
1.8 gph



Light Fog

Use where very little moisture is required to attain desired humidity.

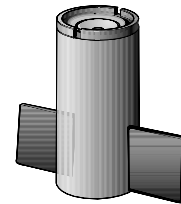
Orange
3.6 gph



Medium Fog

Excellent for most propagation applications.

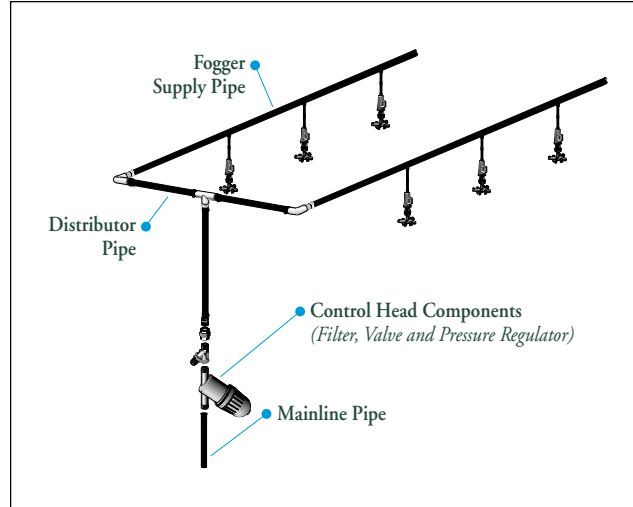
Red
5.4 gph



Heavy Fog

Use outdoors or in open frame houses where wind currents may create significant drift.

QUICK GUIDE



Fogger Color Selection

Number of 4-Way Foggers	15	20	25	30	35	40	45	50	55	60	65	70	75	80	85	90	95	100
GPM / Blue Fogger	2	2	3	4	4	5	5	6	7	7	8	8	9	10	10	11	11	12
GPM / Orange Fogger	4	5	6	7	8	10	11	12	13	14	16	17	18	19	20	22	23	24
GPM / Red Fogger	5	7	9	11	13	14	16	18	20	22	23	25	27	29	31	32	34	36

Filter, Valve & Pressure Regulator Sizing

	Flow Range in GPM	Unit Size
Electric Valve	Up to 15	3/4"
	Up to 20	1"
	Up to 60	1 1/2"
	Up to 100	2"
Disk Filter (120 Mesh)	Up to 18	3/4"
	Up to 26	1"
	Up to 53	1.5" (Super)
	Up to 120	2"
Pressure Regulator (35 psi)	0.5 to 5	3/4" Low Flow
	3.5 to 20	3/4"
	7 to 35	1 1/2"
	15 to 80	2" Model 4

Distributor Pipe Sizing

Pipe Size	Maximum GPM
1/2"	4
3/4"	7
1"	13
1 1/4"	30
1 1/2"	45

Mainline Pipe Sizing

Pipe Size	Maximum GPM
3/4"	8
1"	12
1 1/4"	22
1 1/2"	30
2"	45