



Are You Still Hand Watering?

Netafim Hanging Basket Systems:

- Pay back in the first season
- Represent a new generation in water and fertilizer efficiency

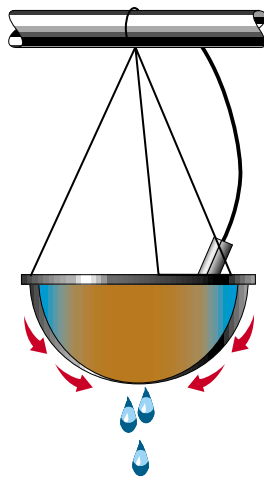
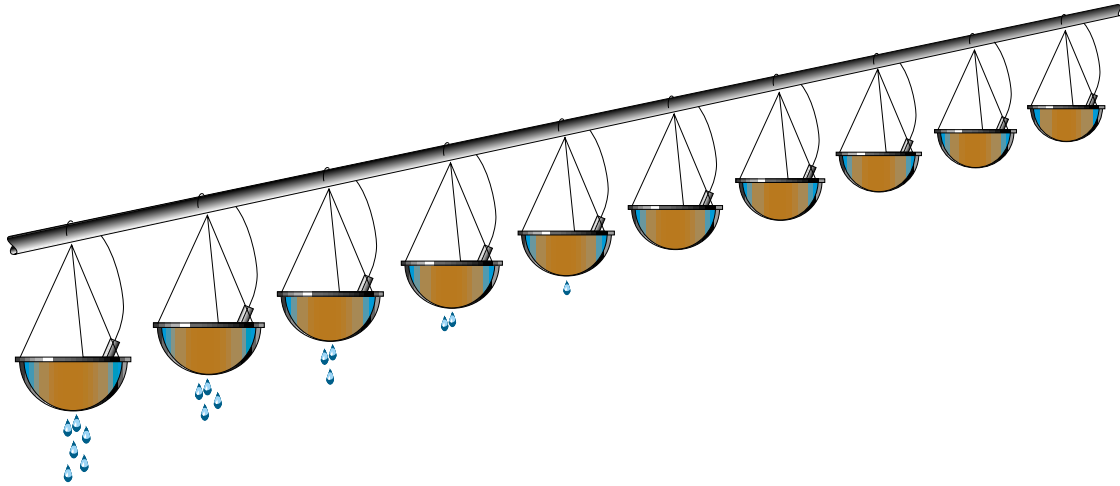


Payback Period *for a Netafim hanging basket watering system*

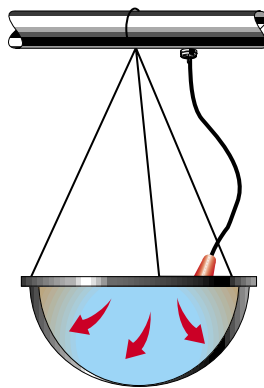
Hand Watering Schedule (<i>per plant</i>)	3 seconds once a day			
Cost per Plant (<i>for Netafim System</i>)	\$0.75			
Wage & Benefits (<i>per hour</i>)	\$7.00	\$8.00	\$9.00	\$12.00
Netafim System Payback (<i>days</i>)	129	113	100	76

QUICK GUIDE



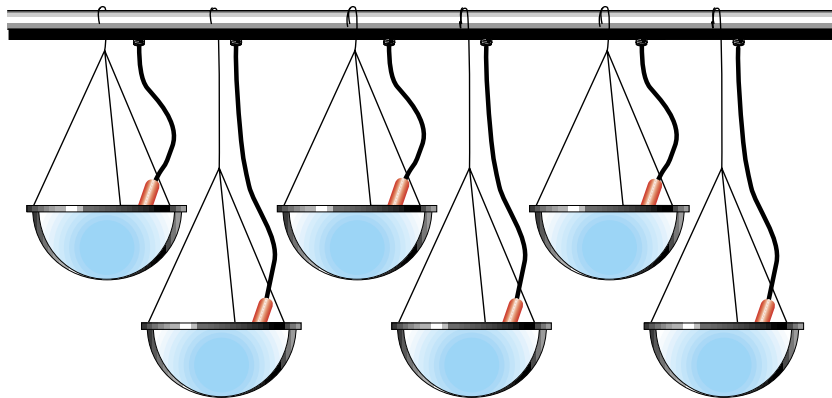


Gap



Slow, low flow from
Netafim Drippers wet the
basket uniformly

QUICK GUIDE



Tube weight drippers easily pull out and get lost.

PCNL Dripper Supply Pipe Sizing

Assumes 35 psi inlet pressure, 10 psi at last dripper & no slope.

Length of Pipe (in feet)	Dripper Spacing (in inches)				
	6"	12"	18"	24"	36"
50	16mm poly	16mm poly	16mm poly	16mm poly	16mm poly
100					
150					
200	1/2" poly				
250					
300	3/4"				

Non-PC Dripper Supply Pipe Sizing

Assumes 20 psi inlet pressure, 94% flow uniformity & no slope.

Length of Pipe (in feet)	Dripper Spacing (in inches)				
	6"	12"	18"	24"	36"
50	16mm poly	16mm poly	16mm poly	16mm poly	16mm poly
100	1/2" poly				
150	3/4" poly	1/2"			
200		3/4" poly	1/2"	1/2" poly	
250	1" poly		3/4" poly	3/4" poly	1/2" poly
300					3/4" poly

Gallons Per Minute vs. number of hanging baskets

Number of Hanging Baskets	100	200	300	400	500	600	700	800	900	1000
GPM	1	2	3	3	4	5	6	7	8	8
Number of Hanging Baskets	1100	1200	1300	1400	1500	1600	1700	1800	1900	2000
GPM	9	10	11	12	13	13	14	15	16	17

Distributor Pipe Sizing

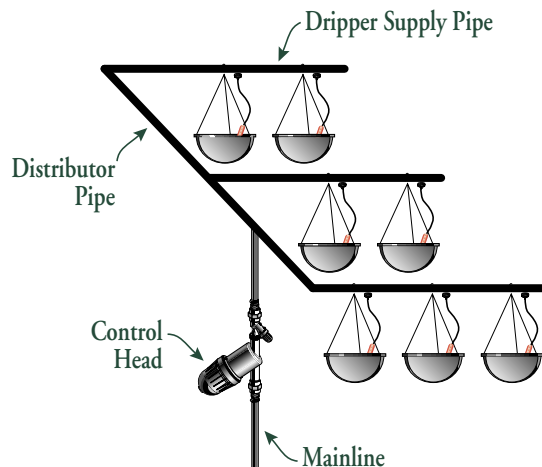
Pipe Size	Maximum GPM
1/2"	4
3/4"	7
1"	13
1 1/4"	30
1 1/2"	45

Mainline Pipe Sizing

Pipe Size	Maximum GPM
3/4"	8
1"	12
1 1/4"	22
1 1/2"	30
2"	45

Filter, Valve & Pressure Regulator Sizing

	Flow Range in GPM	Unit Size
Electric Valve	Up to 15	3/4"
	Up to 20	1"
	Up to 60	1 1/2"
	Up to 100	2"
Disk Filter (120 Mesh)	Up to 18	3/4"
	Up to 26	1"
	Up to 53	1.5" (Super)
	Up to 120	2"
Pressure Regulator (35 psi)	0.5 to 5	3/4" Low Flow
	3.5 to 20	3/4"
	7 to 35	1 1/2"
	15 to 80	2" Model 4



QUICK GUIDE

